

NON Electric Mediator

& HN55

The Smart Mix for Chemical Injection

Reliability

- No piston to wear or corrode
- No chemicals enter the water motor

Consistent Accuracy

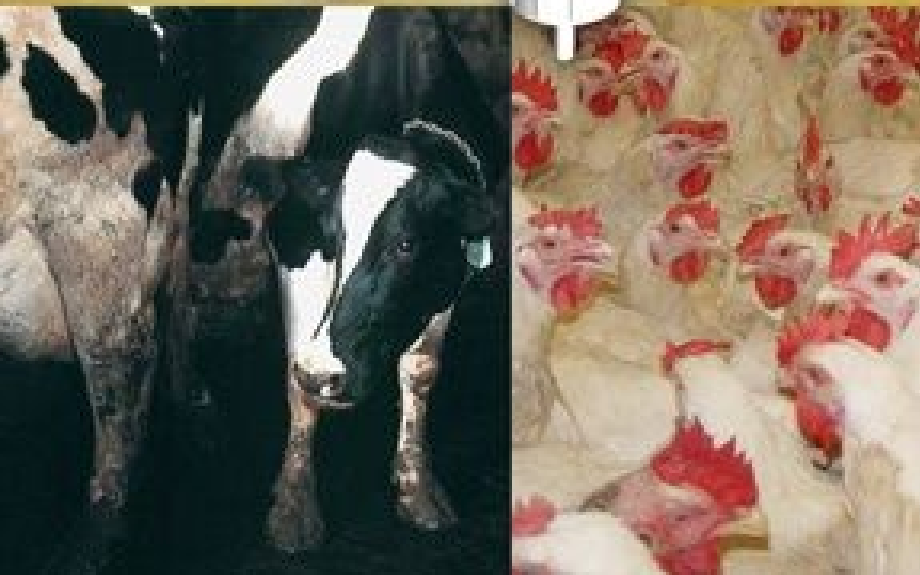
- From low flow rates for day old birds to 720 GHP.

Thick Pharmaceuticals

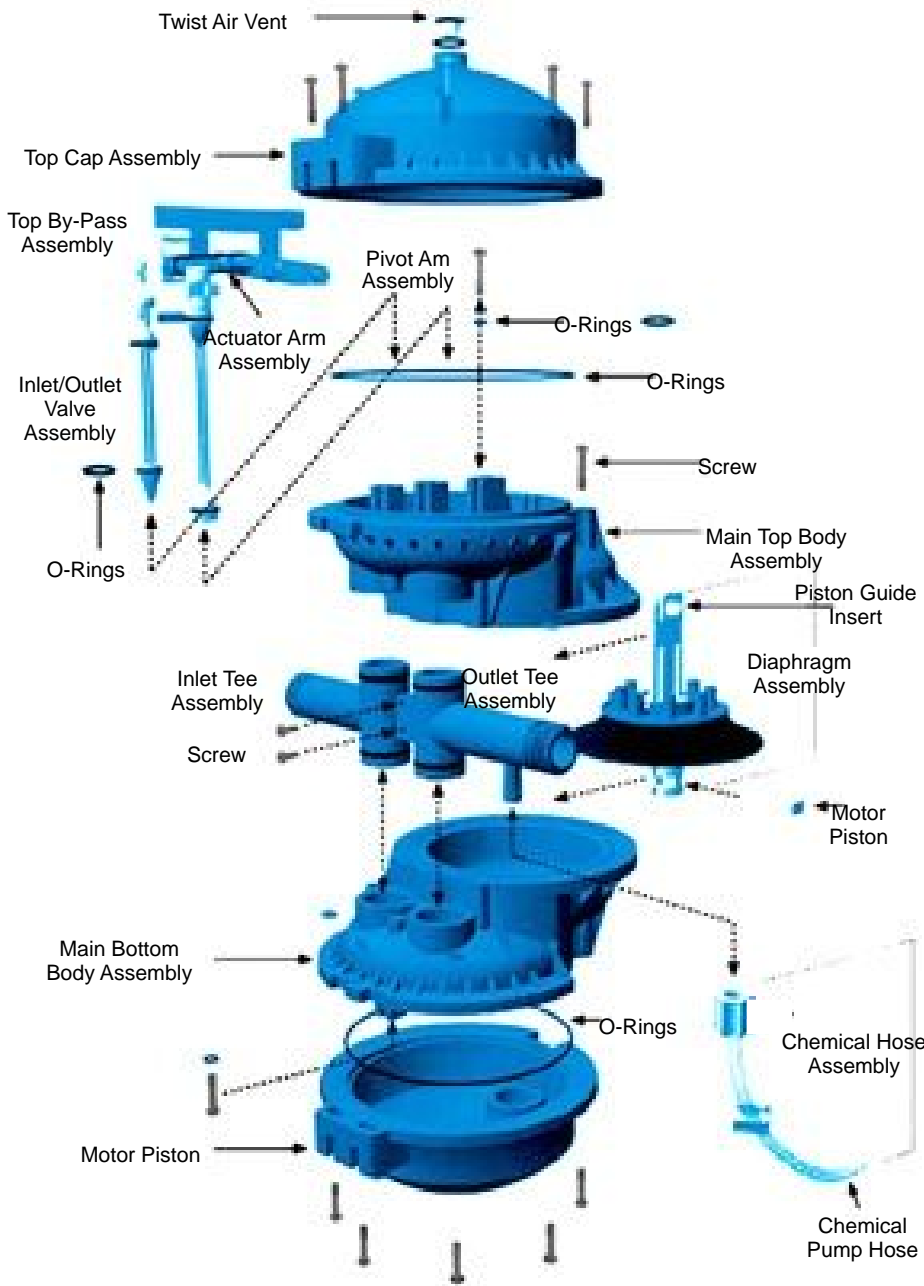
- Tetracycline
- Amoxicilin

Reduced ongoing cost

- No electricity.
- Less maintenance since there is no piston to wear out, no high failure switches required.
- Simple, fast pump replacement without tools.
- Increased uptime.
- Direct factory support.

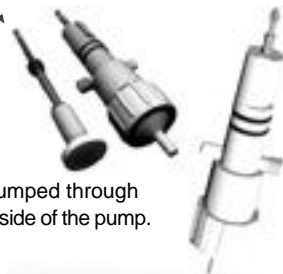


Parts Visual Breakdown



Chemical Pump

The pump stem is the only moving part. Inserted into the bottom of the water motor is a positive displacement chemical pump.



There are only 3 interior parts to the chemical pump.

Chemical is pumped through the port on the side of the pump.

The HN55 injector is designed as a two-part system comprised of a water motor and chemical pump.

The non-electric water motor functions on demand with water flow. Inside the motor is a fixed diaphragm assembly that travels up and down with alternating filling of the upper and lower chambers.

- After years of use, the water motor can be totally rebuilt in about 20 minutes.
- No Chemicals go into the water meter.
- Better management resulting in better yields
Superior, more consistent accuracy
Immune to power failure
- Flexible installation
Mobile
Non-electric
Compact and lightweight
- **Versatile**
Inject multiple chemicals simultaneously
- Reduced initial cost
Lower install costs
Attaches easily to any size water line
Requires no electricity connection

Spec

- ♦ Chemical flow.....1:100, 2:100, 1:128, 2:128
- ♦ Accuracy.....Plus/minus 5%
- ♦ Viscosity.....Up to 3000cps
- ♦ Pressure.....2 PSI to 80 PSI, 1.38 BAR -5.51 BAR
- ♦ Min/max Flow..... 1-720GPH (.167-12GPM), 3.78-2,724 I/H
- ♦ Min/max Temp.....40-110 F, 4.5-43.3 C
- ♦ Fitting/Connection..3/4" NHT (National Hose Thread)
- ♦ Size.....11"hx8 1/2"w x 10" d
- ♦ Weight.....6 3/4 lbs

Distribute In Asia by :

THE GSI GROUP



The GSI Asia Group Sdn. Bhd. (392746-V)

Plot 68, LPM 6, Prai Ind. Estate, 13600 Bukit Tengah, Penang, Malaysia.

Phone (604) 508 3319 Fax (604) 508 4876 e-mail : info@gsiasia.com.my

http://www.gsiasia.net

Toll-free hotline : 1800-88-3319